



Refrigerated Showcases
Models RS-CN-0120, 0160
Items 27156, 27157
Instruction Manual



Revised - 01/06/2021



Toll Free: 1-800-465-0234
Fax: 905-607-0234
Email: service@omcan.com
www.omcan.com

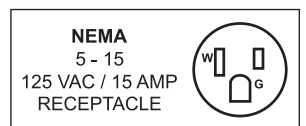


Table of Contents

Model RS-CN-0120 / Model RS-CN-0160

Section	Page
Disclaimer -----	3
General Information -----	4 - 5
Safety and Warranty -----	5 - 7
Technical Specifications -----	7
Operation -----	8 - 9
Maintenance -----	9 - 10
Troubleshooting -----	10
Parts Breakdown -----	11 - 14
Electrical Schematics -----	15
Notes -----	16 - 18
Warranty Registration -----	19

Disclaimer

OMCAN IS NOT RESPONSIBLE FOR ANY DAMAGES DUE TO WATER LEAKS. WARRANTY FOR WATER LEAKS IS VOID IF THE AMBIENT ROOM TEMPERATURE EXCEEDS 75°F AND 55% RELATIVE HUMIDITY, AND THE APPLIANCE DRAIN IS NOT CONNECTED DIRECTLY TO A FLOOR DRAIN.

General Information

Omcan Manufacturing and Distributing Company Inc., Food Machinery of America, Inc. dba Omcan and Omcan Inc. are not responsible for any harm or injury caused due to any person's improper or negligent use of this equipment. The product shall only be operated by someone over the age of 18, of sound mind, and not under the influence of any drugs or alcohol, who has been trained in the correct operation of this machine, and is wearing authorized, proper safety clothing. Any modification to the machine voids any warranty, and may cause harm to individuals using the machine or in the vicinity of the machine while in operation.

CHECK PACKAGE UPON ARRIVAL

Upon receipt of an Omcan shipment please inspect for external damage. If no damage is evident on the external packaging, open carton to ensure all ordered items are within the box, and there is no concealed damage to the machine. If the package has suffered rough handling, bumps or damage (visible or concealed), please note it on the bill of lading before accepting the delivery and contact Omcan within 24 hours, so we may initiate a claim with the carrier. A detailed report on the extent of the damage caused to the machine must be filled out within three days, from the delivery date shown in the shipping documents. Omcan has no recourse for damaged products that were shipped collect or third party.

Before operating any equipment, always read and familiarize yourself with all operation and safety instructions.

Omcan would like to thank you for purchasing this machine. It's of the utmost importance to save these instructions for future reference. Also save the original box and packaging for shipping the equipment if servicing or returning of the machine is required.

Omcan Fabrication et distribution Compagnie Limitée et Food Machinery d'Amérique, dba Omcan et Omcan Inc. ne sont pas responsables de tout dommage ou blessure causé du fait que toute personne ait utilisé cet équipement de façon irrégulière. Le produit ne doit être exploité que par quelqu'un de plus de 18 ans, sain d'esprit, et pas sous l'influence d'une drogue ou d'alcool, qui a été formé pour utiliser cette machine correctement, et est vêtu de vêtements de sécurité appropriés. Toute modification de la machine annule toute garantie, et peut causer un préjudice à des personnes utilisant la machine ou des personnes à proximité de la machine pendant son fonctionnement.

VÉRIFIEZ LE COLIS DÈS RÉCEPTION

Dès réception d'une expédition d'Omcan veuillez inspecter pour dommages externes. Si aucun dommage n'est visible sur l'emballage externe, ouvrez le carton afin de s'assurer que tous les éléments commandés sont dans la boîte, et il n'y a aucun dommage dissimulé à la machine. Si le colis n'a subi aucune mauvaises manipulations, de bosses ou de dommages (visible ou cachée), notez-le sur le bond de livraison avant d'accepter la livraison et contactez Omcan dans les 24 heures qui suivent, pour que nous puissions engager une réclamation auprès du transporteur. Un rapport détaillé sur l'étendue des dommages causés à la machine doit être rempli dans un délai de trois jours, à compter de la date de livraison indiquée dans les documents d'expédition. Omcan n'a aucun droit de recours pour les produits endommagés qui ont été expédiés ou cueilli par un tiers transporteur.



General Information

Avant d'utiliser n'importe quel équipement, toujours lire et vous familiariser avec toutes les opérations et les consignes de sécurité.

Omcan voudrais vous remercier d'avoir choisi cette machine. Il est primordial de conserver ces instructions pour une référence ultérieure. Également conservez la boîte originale et l'emballage pour l'expédition de l'équipement si l'entretien ou le retour de la machine est nécessaire.

Omcan Empresa De Fabricacion Y Distribucion Inc. Y Maquinaria De Alimentos De America, Inc. dba Omcan y Omcan Inc. no son responsables de ningun daño o perjuicio causado por cualquier persona inadecuada o el uso descuidado de este equipo. El producto solo podra ser operado por una persona mayor de 18 años, en su sano juicio y no bajo alguna influencia de droga o alcohol, y que este ha sido entrenado en el correcto funcionamiento de esta máquina, y ésta usando ropa apropiada y autorizada. Cualquier modificación a la máquina anula la garantía y puede causar daños a las personas usando la máquina mientras esta en el funcionamiento.

REVISE EL PAQUETE A SU LLEGADA

Tras la recepcion de un envio Omcan favor inspeccionar daños externos. Si no hay daños evidentes en el empaque exterior, Habra el carton para asegurarse que todos los articulos solicitados estén dentro de la caja y no encuentre daños ocultos en la máquina. Si el paquete ha sufrido un manejo de poco cuidado, golpes o daños (visible o oculto) por favor anote en la factura antes de aceptar la entrega y contacte Omcan dentro de las 24 horas, de modo que podamos iniciar una reclamación con la compañía. Un informe detallado sobre los daños causados a la máquina debe ser llenado en el plazo de tres días, desde la fecha de entrega que se muestra en los documentos de envío. Omcan no tiene ningun recurso por productos dañados que se enviaron a recoger por terceros.

Antes de utilizar cualquier equipo, siempre lea y familiarizarse con todas las instrucciones de funcionamiento y seguridad.

Omcan le gustaría darle las gracias por la compra de esta máquina. Es de la mayor importancia para salvar estas instrucciones para futuras consultas. Además, guarda la caja original y el embalaje para el envío del equipo si servicio técnico o devolución de la máquina que se requiere.

Safety and Warranty

Handle with care	Dry place
Unplug the wall socket first. Never tilt it over 45 degrees when handling.	Always place the refrigerator in a dry location.

Safety and Warranty

<p>Sufficient space The distance from both sides and back of refrigerator to wall or other substance must be no less than 10 cm (4"). The refrigeration capability may decrease if its surrounding space is too small to circulate air.</p>	<p>Well ventilated Always place the refrigerator in an area with proper ventilation. When using for the first time, wait at least 24 hours after handling to start.</p>
<p>Far from heat source Never place the refrigerator in direct sunlight. Never place refrigerator near heat source as it reduces refrigeration capabilities.</p>	<p>Heavy load Never put any heavy objects on top of the refrigerator.</p>
<p>Do not make holes Never make any holes on the refrigerator. Do not attach any objects onto the refrigerator.</p>	<p>Stable Location Unpack and place the refrigerator on level and stable ground.</p>
<p>Exclusive power socket Normally, the power supply should be 100 – 110V, 60 Hz single phase AC with exclusive single phase receptacle.</p>	<p>Do not share the socket Never let the refrigerator share a socket with another appliance. The cable may become hot and this may cause a fire.</p> <p>DO NOT USE EXTENSION CORDS.</p>
<p>Protect cables Never break or damage the cables as this may cause current leakage resulting in a fire.</p>	<p>No water flushing Never spray down refrigerator with pressurized water supply.</p>
<p>Avoid flammable and explosive objects Never put any flammable or explosive items inside the refrigerator such as gasoline or alcohol. Never put any dangerous products in close proximity to the refrigerator.</p>	<p>No spray Do not spray the unit with a flammable substance such as paint. This may result in a fire.</p>
<p>After power break After a power break or unplugging the refrigerator, always wait at least 5 minutes before starting the refrigerator again.</p>	<p>Medical Storage No medicine is allowed to be kept inside the refrigerator.</p>

NOTE

- The electric circuit diagram and parameters on the product name plate are subject to change without the manufacturer having to change the manual.
- The design might be improved without notice.
- If the power cord is damaged, it must be replaced by the manufacturer, its service agent or a qualified electrician in order to avoid injury.

WARNING: The unit uses R134a refrigerant. Make sure that all precautions against fire have been taken.



Safety and Warranty

1 YEAR PARTS AND LABOUR WARRANTY

Within the warranty period, contact Omcan Inc. at 1-800-465-0234 to schedule an Omcan authorized service technician to repair the equipment locally.

Unauthorized maintenance will void the warranty. Warranty covers electrical and part failures, not improper use.

Please see <https://omcan.com/disclaimer> for complete info.

WARNING:

The packaging components are classified as normal solid urban waste and can therefore be disposed of without difficulty.

In any case, for suitable recycling, we suggest disposing of the products separately (differentiated waste) according to the current norms.

DO NOT DISCARD ANY PACKAGING MATERIALS IN THE ENVIRONMENT!

Technical Specifications

Model	RS-CN-0120	RS-CN-0160
Capacity	120 L / 4.24 cu. ft.	160 L / 5.65 cu. ft.
Rack Size	14.5" x 25" / 368 x 635mm 13.3" x 25" / 337 x 635mm	14.5" x 32" / 368 x 813mm 13.3" x 32" / 813mm
Temperature Range	0 - 12°C / 32 - 53.5°F	
Max Ambient Temp Rating	32°C / 90°F	
Power Input	230W	
Refrigerant	R134a	
Electrical	110V / 60Hz / 1	
Dimensions	28" x 22.5" x 27" / 711 x 572 x 686mm	35" x 22.5" x 27" / 889 x 572 x 686mm
Packaging Dimensions	30.5" x 25" x 29.3" 775 x 635 x 743mm	37.5" x 25" x 29.3" 953 x 635 x 743mm
Weight	141 lbs. / 64 kgs.	156 lbs. / 71 kgs.
Packaging Weight	145.5 lbs. / 66 kgs.	162 lbs. / 73 kgs.
Item Number	27156	27157

Operation

BEFORE USE

Ensure the unit is upright and positioned in its location for 12 hours prior to use.

Plug the refrigerator in a 110V~ socket exclusively for the unit. After the refrigerator is running, test the air suction to confirm it is sufficiently cold. Then you may put food inside the unit. Make sure the food product is already cooled before placing it in the display case. The unit should not be used to cool food products.

DIGITAL TEMPERATURE CONTROLLER

The digital temperature controller is easy to operate and controls the compressor.

- The main functions are: Temperature display, manual control, automatic defrost, light control, value storing, self-testing and parameter locking.

Digital Controller Operation:

1. Press ▼ and display **ON**, parameter unlock.
2. Press **SET** button and hold until display **0**, and then press ▲ or ▼ to set lower limit of the temperature. Usually set **0** =2.
3. Press **SET** button and hold until display **1**, and then press ▲ or ▼ to set upper limit of the temperature. Usually set **1** =6 or 8.
4. Press **SET** button and hold until display **2**, and then press ▲ or ▼ to set temperature difference. Usually set **2** =4.
5. Press **SET** button and hold until display **3**, and then press ▲ or ▼ to set the delay time for compressor starting work. The scale would be 0-5 minutes. Usually set **3** =3.
6. Press **SET** button and hold until display **4**, and then press ▲ or ▼ to adjust the temperature of cold-room probe. The scale would be from -5°C to 5°C.
7. Press **SET** button and hold until display **5**, and then press ▲ or ▼ to adjust the temperature of defrost probe. The scale would be from -5°C to 5°C.
8. Press **SET** button and hold until display **6**, and then press ▲ or ▼ to set defrost time. The scale would be 10-30 minutes. Usually set **6** =25.
9. Press **SET** button and hold until display **7**, and then press ▲ or ▼ to set the interval of defrost. The scale would be 4-8 hours. Usually set **7** =6.
10. Press **SET** button and hold until display **8**, and then press ▲ or ▼ to set the temperature of start working. The scale would be 0-20°C. Usually set **8** =20°C.
11. Press **SET** button and hold until display **9**, If set **9** as **01**, the room temperature is locked during defrost, and the last value before defrost is displayed. When defrost ends, normal display will be resumed after 20 minutes delay of room temperature display. The defrost display will flash during the delay.
12. Press **SET** button and hold until display **A**, it is temperature unit. Set **00** as Celsius scale, set **1** as Fahrenheit.
13. Press the light switch, light is on, press again, light is off.
14. Refrigeration indicator light: The light is on when refrigeration, the light is off when the cold room temperature is constant, the light will flash when there is a delay start.
15. Defrost indicator light: The light is on when defrosting, the light will flash when there is a delay display defrost.
16. Irregular working mode: **HH1** is displayed if the control probe short circuits or a high temperature (>80°F) is

Operation

reached, LL1 is displayed if the control probe short circuits or a low temperature (<-60°F) is reached, and the compressor start working 45 minutes and then stop working 15 minutes. The control probe happened with short circuit, open circuit or over limit, the refrigerator will top defrost, and will be under control of defrost time.

CAUTION

- Reducing the frequency of opening the refrigerator door will keep more cold air inside the refrigerator.
- Do not block air suction or outlet. Air must continue circulating to increase refrigeration capability.
- Do not over fill or over stock the refrigerator, as it will influence the cooling effect. Adjust the rack height for proper food storage.
- Cool hot food down to room temperature before storing it in the refrigerator.
- Try to reduce open times and keep refrigerator cold and closed, if power is ever off. Only allow a skilled service individual with proper tools to repair damaged power cables. Never touch compressor, as it can result in injury.
- If supply cord is damaged, it must be replaced by the manufacturer, its service agent, or similarly qualified persons in order to avoid a hazard.
- This appliance is not intended for use by persons (including children) with reduced physical, sensory or mental capabilities, or lack of experience and knowledge, unless they have been given supervision or instruction concerning use of the appliance by a person responsible for their safety.
- Children should be supervised to ensure that they do not play with the appliance.

WARNING: Keep ventilation openings, in the appliance enclosure or in the built-in structure, clear of obstruction.

WARNING: Do not use mechanical devices of other means to accelerate the defrosting process, other than those recommended by the manufacturer.

WARNING: Do not damage the refrigerant circuit.

WARNING: Do not use electrical appliances inside the food storage compartments of the appliance, unless they are of the type recommended by the manufacturer.



CAUTION: Risk of fire. The height of the triangle in the symbol should be at least 15mm.

Maintenance

Keep the refrigerator clean and periodical maintenance is necessary. Always unplug the socket before maintenance. Never use damaged plug or loose socket to prevent from electric shock or short circuit. Never flush the refrigerator. Never use alkali detergent, soap, gasoline, acetone or brush.

1. Clean outside:

Dip soft cloth in neutral detergent (tableware detergent) to clean the outside of the refrigerator and then wipe it with dry soft cloth.

Maintenance

2. Clean inside:
Take rack out for cleaning with water. Use soft cloth to wipe the box.
3. Shut down refrigerator for a long time:
Take all food out and unplug the wall socket. Clean both inside and outside of the refrigerator thoroughly and open the door for sufficient dry. The glass breaks easily. Keep the glass far from children.
4. Replacement of lamp in the light box:
If the LED lamp is damaged, it must be replaced by the manufacturer, or its service agent.

Troubleshooting

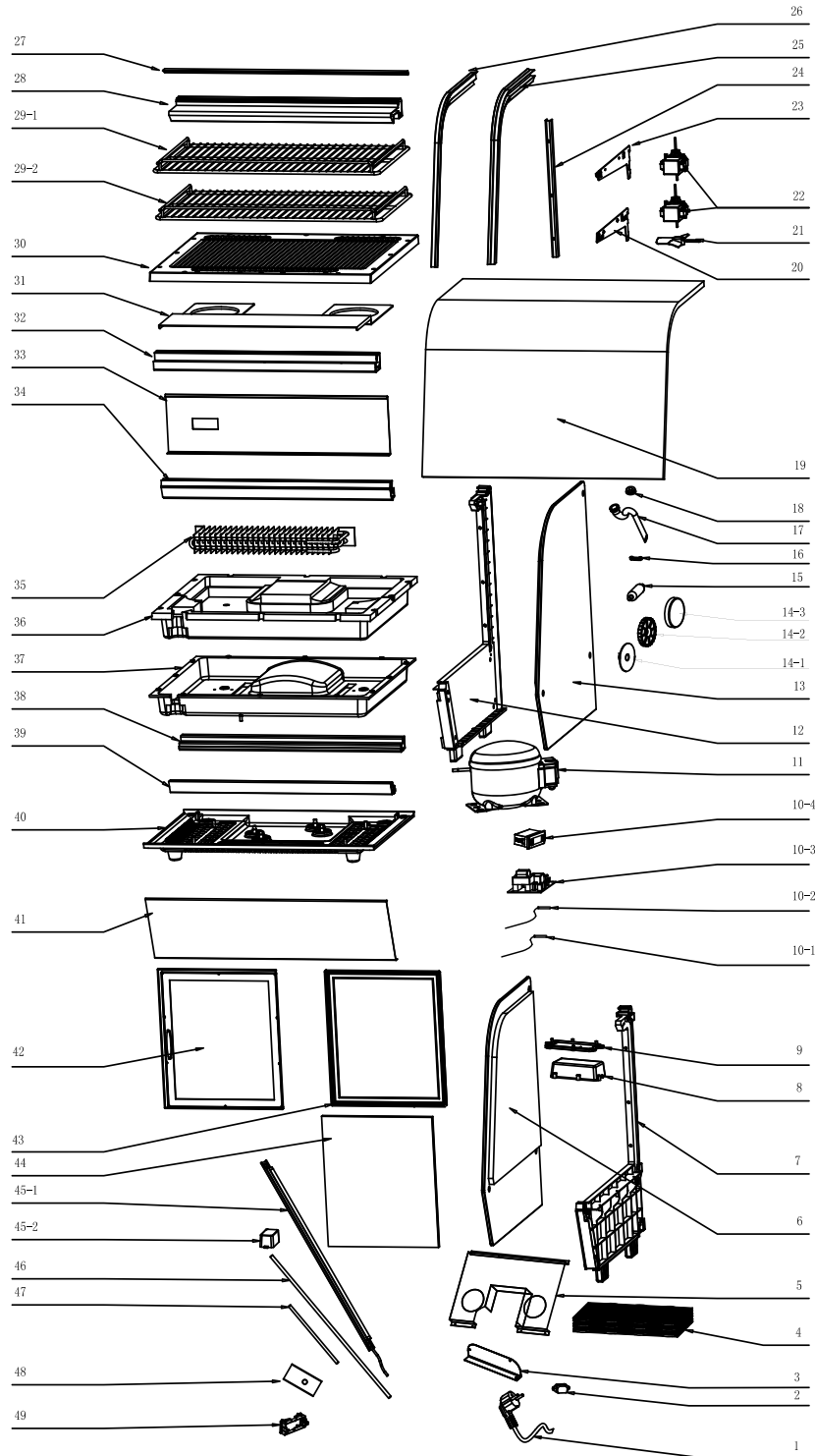
Trouble	Cause and Remedy
No refrigeration	Is the plug in the socket well?
	Is the fuse broken?
	Is there no power?
Unsatisfactory refrigeration	Is it under the sunlight? Is there any heat source nearby?
	Does the door close well? Has the door been open for a long time?
	Is the door seal strip deformed or damaged?
	Is food congested or too much?
	Does food block the air suction outlet?
	Regulate the temperature controller.
Too much noise	The refrigerator is not level.
	The refrigerator touches the wall or other objects.
	There is a loose part in the refrigerator.
Contact Omcan at 1-800-465-0234 for help if simple troubleshooting does not solve the problems.	

The following situations are not problems:

1. The murmur of water is heard when the refrigerator is working. This is normal as the coolant is circulating in the system.
2. During wet season, condensation may be found on the outside of the refrigerator. This is not a problem, this is caused by high humidity. Simply use a cloth to wipe it.

Parts Breakdown

Model RS-CN-0120-E 27156



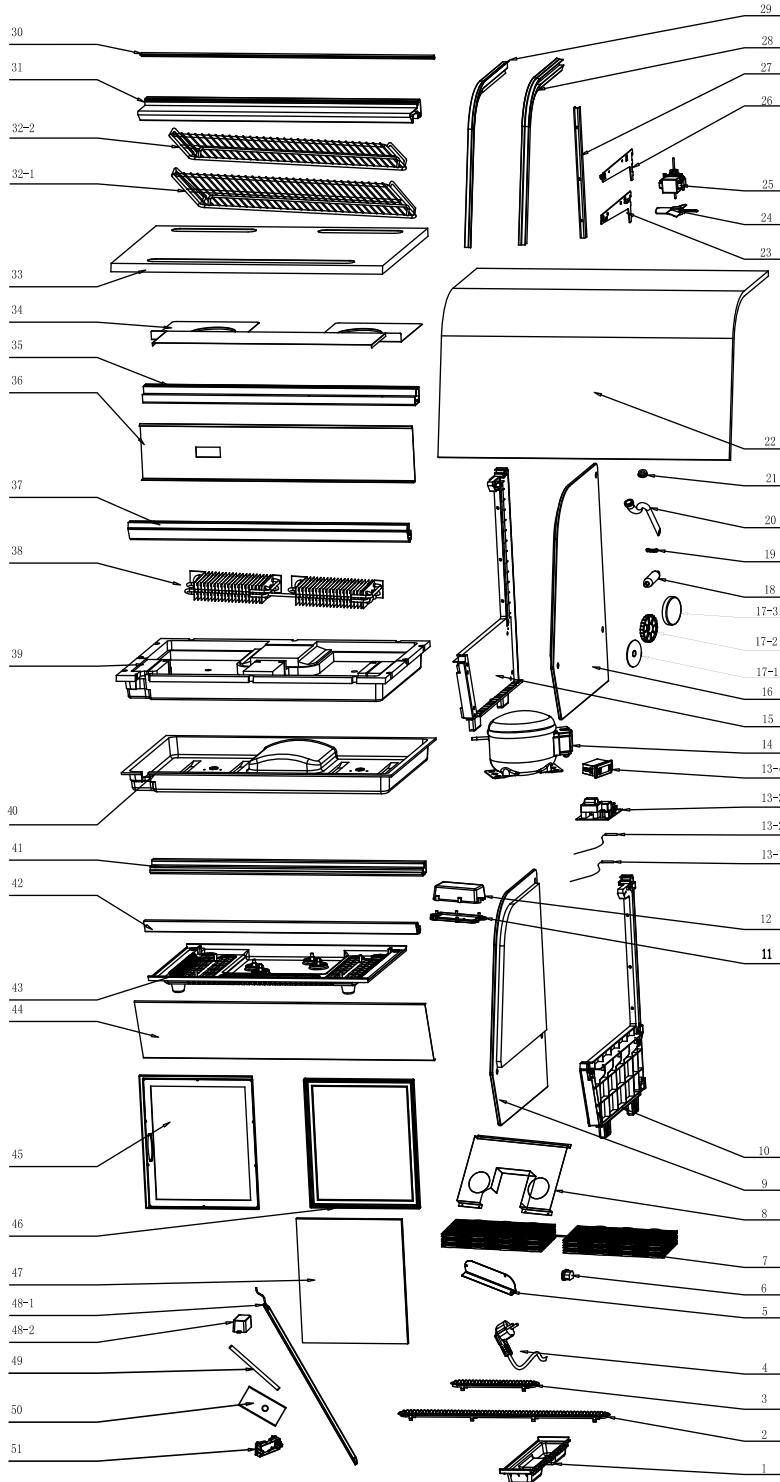
Parts Breakdown

Model RS-CN-0120-E 27156

Item No.	Description	Position	Item No.	Description	Position	Item No.	Description	Position
68511	Power Cord for 27156	1	30744	Water Pipe for 27156	17	30762	Front Middle Pillar for 27156	34
70860	Socket for 27156	2	30613	Motor Fixed Ring for 27156	18	30763	Evaporator for 27156	35
68510	Fixed Board of PCB Box for 27156	3	30746	Front Curved Glass for 27156	19	30764	Foam Base of Evaporator for 27156	36
30734	Condenser for 27156	4	30747	Left Shelf Bracket for 27156	20	30765	Plastic Base for Foam for 27156	37
68508	Condenser Cushion for 27156	5	30748	Fan Blade for 27156	21	30766	Rear Bottom Pillar for 27156	38
30735	Left Glass for 27156	6	30749	Motor Fan for 27156	22	30767	Front Bottom Pillar for 27156	39
30736	Left Panel for 27156	7	30750	Right Shelf Bracket for 27156	23	30768	Bottom Base of Compressor for 27156	40
60137	Controller Box for 27156	8	30751	Pillar for Bracket for 27156	24	30769	Front Frame for 27156	41
60136	Controller Panel for 27156	9	30797	Left Seal for 27156	25	30771	Inner Door Frame for 27156	42
30737	Digital Controller for 27156	10	30798	Right Seal for 27156	26	30770	Outer Door Frame for 27156	43
30738	Compressor for 27156	11	30754	Decorative Board for 27156	27	30772	Door Glass for 27156	44
30739	Right Panel for 27156	12	30755	Top Panel for 27156	28	30773	LED Light for 27156	45-1
30740	Right Glass for 27156	13	30756	Shelf 1 for 27156	29-1	30774	LED Power for 27156	45-2
79314	Decoration Nut Gasket for 27156	14-1	30757	Shelf 2 for 27156	29-2	68475	Connected Tube for 27156	46
79313	Nut Gasket for 27156	14-2	30758	Vent Tray for 27156	30	30742	Accumulator for 27156	47
79312	Nut Decoration for 27156	14-3	30759	Evaporator Protect Board for 27156	31	79662	Metal Base of Fan Motor for 27156	48
30624	Dry Filter for 27156	15	30760	Rear Middle Pillar for 27156	32	60125	Digital Controller Holder for 27156	49
30617	Wire Board for 27156	16	30761	Rear Base Panel for 27156	33			

Parts Breakdown

Model RS-CN-0160-E 27157



Parts Breakdown

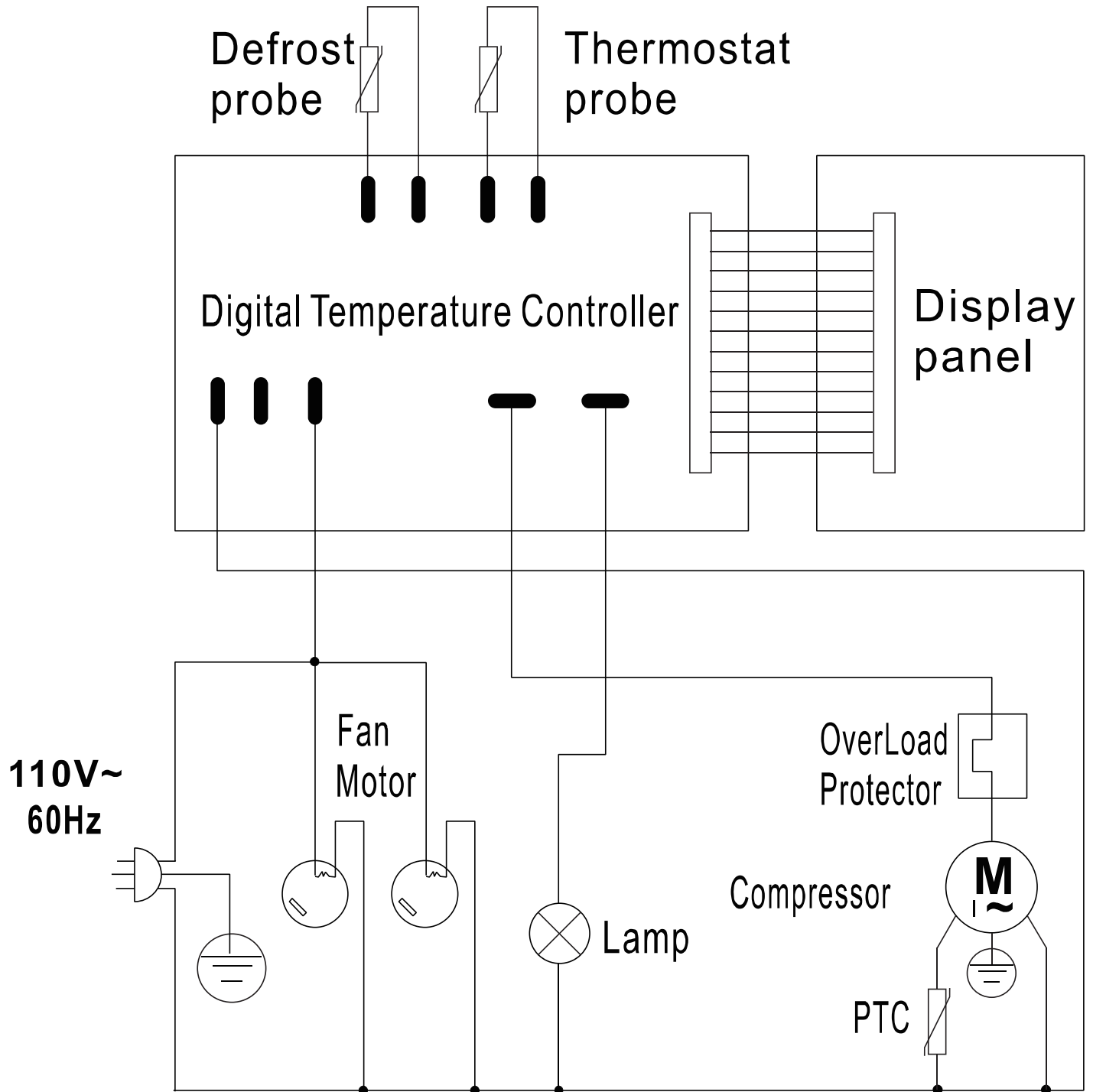
Model RS-CN-0160-E 27157

Item No.	Description	Position	Item No.	Description	Position	Item No.	Description	Position
30775	Water Tray for 27157	1	30624	Dry Filter for 27157	18	30806	Rear Base Panel for 27157	36
30776	Cover for Air Outlet for 27157	2	30617	Wire Board for 27157	19	30807	Front Middle Pillar for 27157	37
30777	Cover for Air Suction for 27157	3	30744	Water Pipe for 27157	20	30808	Evaporator for 27157	38
68511	Power Cord for 27157	4	30613	Motor Fixed Ring for 27157	21	30809	Foam Base of Evaporator for 27157	39
68510	Fixed Board of PCB Box for 27157	5	30791	Front Curved Glass for 27157	22	30810	Plastic Base for Pillar for 27157	40
70860	Socket for 27157	6	30747	Left Shelf Bracket for 27157	23	68517	Rear Bottom Pillar for 27157	41
30779	Condenser for 27157	7	30793	Fan Blade for 27157	24	68516	Front Bottom Pillar for 27157	42
68530	Condenser Cushion for 27157	8	30749	Motor Fan for 27157	25	30768	Bottom Base of Compressor for 27157	43
30735	Left Glass for 27157	9	30750	Right Shelf Bracket for 27157	26	30814	Front Frame for 27157	44
30736	Left Panel for 27157	10	30751	Pillar for Bracket for 27157	27	30816	Inner Door Frame for 27157	45
60137	Controller Box for 27157	11	30797	Left Seal for 27157	28	30815	Outer Door Frame for 27157	46
60136	Controller Panel for 27157	12	30798	Right Seal for 27157	29	30817	Door Glass for 27157	47
30737	Digital Controller for 27157	13	30799	Decorative Board for 27157	30	30818	LED Light for 27157	48-1
30738	Compressor for 27157	14	30800	Top Panel for 27157	31	30774	LED Power for 27157	48-2
30739	Right Panel for 27157	15	71684	Chrome Shelf 2 for 27157	32-1	30742	Accumulator for 27157	49
30740	Right Glass for 27157	16	71683	Chrome Shelf 1 for 27157	32-2	79662	Metal Base of Fan Motor for 27157	50
79314	Decoration Nut Gasket for 27157	17-1	30803	Vent Tray for 27157	33	60125	Digital Controller Holder for 27157	51
79313	Nut Gasket for 27157	17-2	68524	Evaporator Protect Board for 27157	34			
79312	Nut Decoration for 27157	17-3	30805	Rear Middle Pillar for 27157	35			

Electrical Schematics

Model RS-CN-0120-E 27156

Model RS-CN-0160-E 27157





Warranty Registration

Thank you for purchasing an Omcan product. To register your warranty for this product, complete the information below, tear off the card at the perforation and then send to the address specified below. You can also register online by visiting:

Merci d'avoir acheté un produit Omcan. Pour enregistrer votre garantie pour ce produit, complétez les informations ci-dessous, détachez la carte au niveau de la perforation, puis l'envoyer à l'adresse spécifiée ci-dessous. Vous pouvez également vous inscrire en ligne en visitant:

Gracias por comprar un producto Omcan usted. Para registrar su garantía para este producto, complete la información a continuación, cortar la tarjeta en la perforación y luego enviarlo a la dirección indicada a continuación. También puede registrarse en línea en:

<https://omcan.com/warranty-registration/>

For mailing in Canada

Pour postale au Canada

Por correo en Canadá

OMCAN

PRODUCT WARRANTY REGISTRATION

3115 Pepper Mill Court,

Mississauga, Ontario

Canada, L5L 4X5

For mailing in the US

Pour diffusion aux États-Unis

Por correo en los EE.UU.

OMCAN

PRODUCT WARRANTY REGISTRATION

4450 Witmer Industrial Estates, Unit 4,

Niagara Falls, New York

USA, 14305

or email to: service@omcan.com



Purchaser's Information

Name: _____

Address: _____

City: _____ Province or State: _____ Postal or Zip: _____

Country: _____

Dealer from which Purchased: _____

Dealer City: _____ Dealer Province or State: _____

Invoice: _____

Model Name: _____ Model Number: _____

Machine Description: _____

Date of Purchase (MM/DD/YYYY): _____

Would you like to extend the warranty? Yes No

Company Name: _____

Telephone: _____

Email Address: _____

Type of Company:

Restaurant Bakery Deli

Butcher Supermarket Caterer

Institution (specify): _____

Other (specify): _____

Serial Number: _____

Date of Installation (MM/DD/YYYY): _____

Thank you for choosing Omcan | Merci d'avoir choisi Omcan | Gracias por elegir Omcan



Since 1951 Omcan has grown to become a leading distributor of equipment and supplies to the North American food service industry. Our success over these many years can be attributed to our commitment to strengthen and develop new and existing relationships with our valued customers and manufacturers. Today with partners in North America, Europe, Asia and South America, we continually work to improve and grow the company. We strive to offer customers exceptional value through our qualified local sales and service representatives who provide convenient access to over 5,000 globally sourced products.

Depuis 1951 Omcan a grandi pour devenir un des “leaders” de la distribution des équipements et matériel pour l’industrie des services alimentaires en Amérique du Nord. Notre succès au cours de ces nombreuses années peut être attribué à notre engagement à renforcer et à développer de nouvelles et existantes relations avec nos clients et les fabricants de valeur. Aujourd’hui avec des partenaires en Amérique du Nord, Europe, Asie et Amérique du Sud, nous travaillons continuellement à améliorer et développer l’entreprise. Nous nous efforçons d’offrir à nos clients une valeur exceptionnelle grâce à nos ventes locales qualifiées et des représentants de service qui offrent un accès facile à plus de 5000 produits provenant du monde entier.

Desde 1951 Omcan ha crecido hasta convertirse en un líder en la distribución de equipos y suministros de alimentos en América del Norte industria de servicios. Nuestro éxito en estos años se puede atribuir a nuestro compromiso de fortalecer y desarrollar nuevas relaciones existentes con nuestros valiosos clientes y fabricantes. Hoy con socios de América del Norte, Europa, Asia y América del Sur, que trabajan continuamente para mejorar y crecer la empresa. Nos esforzamos por ofrecer a nuestros clientes valor excepcional a través de nuestro local de ventas y representantes de los servicios que proporcionan un fácil acceso a más de 5,000 productos con origen a nivel mundial.

